



www.billbeall.com

2,400 SF - FOR LEASE - AVAILABLE: MARCH 1, 2021

Kansas Station

3041 S. Kansas Expressway, Springfield, MO



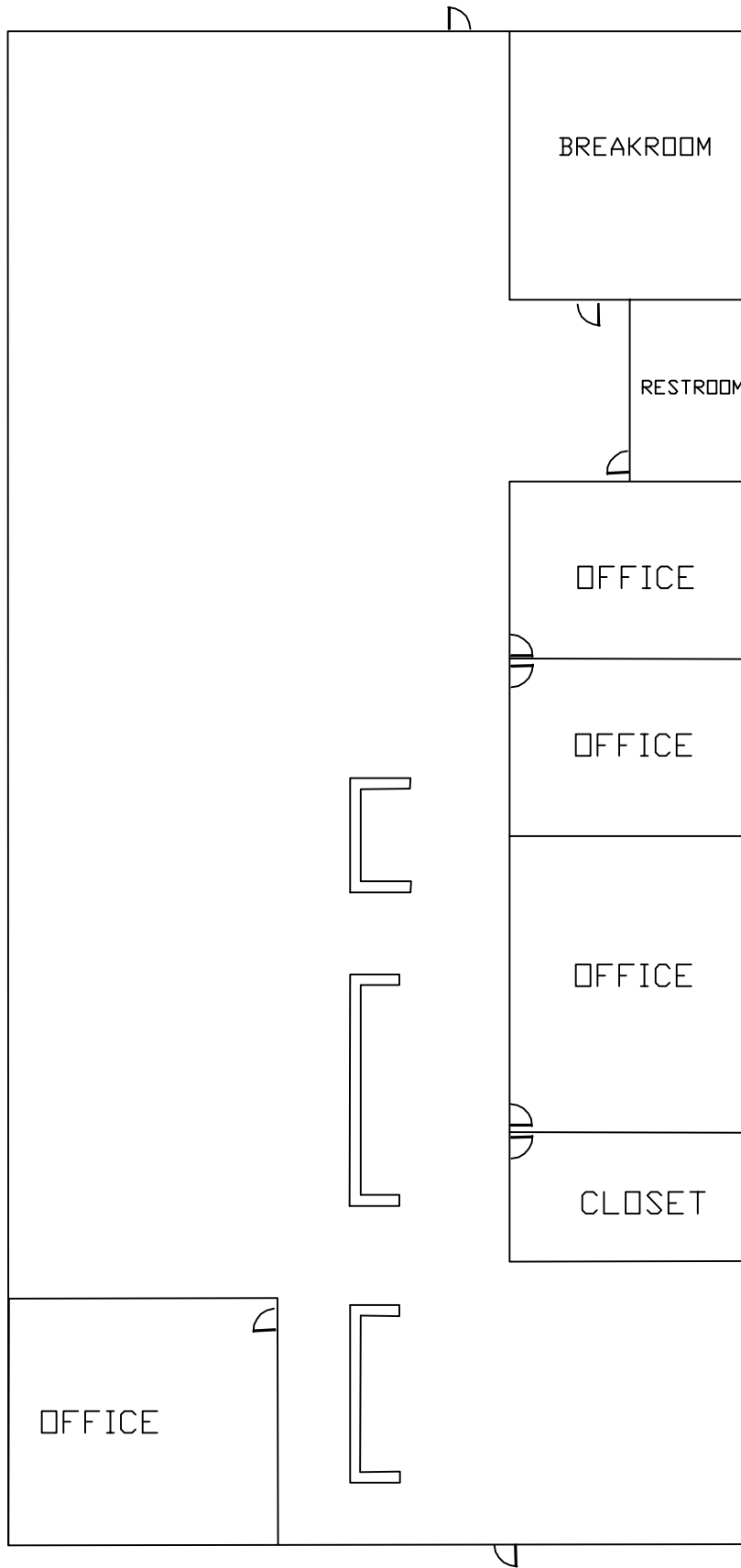
HIGHLIGHTS

- 2,400 SF
- 4 Private Offices
- Large Open Flex Space
- Front Door Parking
- CAM: +/- \$3.35/ SF = \$670.00 / Month
- Lease Rate: \$10.00 / SF = \$2,000.00 / Month
- Estimated Monthly Payment = \$2,670.00



FOR ADDITIONAL INFORMATION CONTACT

Bill Beall Co., Inc.
2921 S. National Ave., Springfield, MO 65804
(417) 887-5535 email: beall@billbeall.com



3041 S. KANSAS EXPRESSWAY

Kansas Station

3041 S. Kansas Expressway, Springfield, MO



FOR ADDITIONAL INFORMATION CONTACT

Bill Beall Co., Inc.

2921 S. National Ave., Springfield, MO 65804

Kansas Station

3041 S. Kansas Expressway, Springfield, MO



Traffic Counts:

Kansas Expressway N. of Battlefield = 36,770

Kansas Expressway S. of Battlefield = 31,039

Battlefield E. of Kansas Expressway = 27,941

Battlefield W. of Kansas Expressway = 27,466

FOR ADDITIONAL INFORMATION CONTACT

Bill Beall Co., Inc.

2921 S. National Ave., Springfield, MO 65804

(417) 887-5535 email: beall@billbeall.com



Business Summary

3033 S Kansas Expy, Springfield, Missouri, 65807
Rings: 1, 3, 5 mile radii

Prepared by Esri
Latitude: 37.15876
Longitude: -93.31656

Data for all businesses in area	1 mile		3 miles		5 miles	
	Businesses		Businesses		Businesses	
	Number	Percent	Number	Percent	Number	Percent
Total Businesses:	466		4,062		8,675	
Total Employees:	5,675		81,761		165,096	
Total Residential Population:	9,587		77,169		171,759	
Employee/Residential Population Ratio (per 100 Residents)	59		106		96	
by SIC Codes	Number	Percent	Number	Percent	Number	Percent
Agriculture & Mining	6	1.3%	78	1.9%	309	0.4%
Construction	32	6.9%	194	4.8%	1,297	1.6%
Manufacturing	17	3.6%	58	1.4%	1,517	1.9%
Transportation	8	1.7%	83	2.0%	973	1.2%
Communication	3	0.6%	58	1.4%	1,063	1.3%
Utility	2	0.4%	7	0.2%	521	0.6%
Wholesale Trade	35	7.5%	100	2.5%	1,813	2.2%
Retail Trade Summary	88	18.9%	958	23.6%	17,991	22.0%
Home Improvement	4	0.9%	28	0.7%	455	0.6%
General Merchandise Stores	3	0.6%	328	5.8%	2,648	3.2%
Food Stores	11	2.4%	231	4.1%	1,431	1.8%
Auto Dealers, Gas Stations, Auto Aftermarket	13	2.8%	92	2.3%	2,012	2.5%
Apparel & Accessory Stores	4	0.9%	86	2.1%	901	1.1%
Furniture & Home Furnishings	8	1.7%	45	0.8%	385	0.5%
Eating & Drinking Places	20	4.3%	297	7.3%	5,714	7.0%
Miscellaneous Retail	25	5.4%	258	6.4%	4,446	5.4%
Finance, Insurance, Real Estate Summary	53	11.4%	553	13.6%	4,859	5.9%
Banks, Savings & Lending Institutions	10	2.1%	106	2.6%	1,432	1.8%
Securities Brokers	8	1.7%	72	1.8%	341	0.4%
Insurance Carriers & Agents	9	1.9%	155	3.8%	910	1.1%
Real Estate, Holding, Other Investment Offices	26	5.6%	219	5.4%	2,176	2.7%
Services Summary	195	41.8%	1,741	42.9%	49,898	61.0%
Hotels & Lodging	1	0.2%	16	0.4%	218	0.3%
Automotive Services	11	2.4%	76	1.9%	735	0.9%
Motion Pictures & Amusements	15	3.2%	104	2.6%	836	1.0%
Health Services	28	6.0%	407	10.0%	37,370	45.7%
Legal Services	9	1.9%	82	2.0%	450	0.6%
Education Institutions & Libraries	3	0.6%	61	1.5%	1,921	2.3%
Other Services	127	27.3%	996	24.5%	8,369	10.2%
Government	4	0.9%	35	0.9%	1,399	1.7%
Unclassified Establishments	25	5.4%	198	4.9%	120	0.1%
Totals	466	100.0%	4,062	100.0%	81,761	100.0%
					165,096	100.0%
					171,759	100.0%

Source: Copyright 2019 Infogroup, Inc. All rights reserved. Esri Total Residential Population forecasts for 2019.
Date Note: Data on the Business Summary report is calculated using Esri's Data allocation method which uses census block groups to allocate business summary data to custom areas.



Business Summary

3033 S Kansas Expy, Springfield, Missouri, 65807
Rings: 1, 3, 5 mile radii

Prepared by Esri
Latitude: 37.15876
Longitude: -93.31656

by NAICS Codes	Businesses		Employees		Businesses		Employees		Businesses		Employees	
	Number	Percent	Number	Percent	Number	Percent	Number	Percent	Number	Percent	Number	Percent
Agriculture, Forestry, Fishing & Hunting	0	0.0%	0	0.0%	12	0.3%	46	0.1%	25	0.3%	276	0.2%
Mining	0	0.0%	0	0.0%	2	0.0%	6	0.0%	4	0.0%	18	0.0%
Utilities	2	0.4%	255	4.5%	2	0.0%	340	0.4%	6	0.1%	449	0.3%
Construction	35	7.5%	246	4.3%	218	5.4%	1,424	1.7%	519	6.0%	3,790	2.3%
Manufacturing	21	4.5%	375	6.6%	69	1.7%	1,641	2.0%	229	2.6%	6,515	3.9%
Wholesale Trade	34	7.3%	756	13.3%	98	2.4%	1,802	2.2%	261	3.0%	5,077	3.1%
Retail Trade	60	12.9%	998	17.6%	626	15.4%	12,020	14.7%	1,244	14.3%	18,394	11.1%
Motor Vehicle & Parts Dealers	8	1.7%	89	1.6%	71	1.7%	1,910	2.3%	166	1.9%	3,603	2.2%
Furniture & Home Furnishings Stores	5	1.1%	23	0.4%	31	0.8%	247	0.3%	74	0.9%	572	0.3%
Electronics & Appliance Stores	3	0.6%	21	0.4%	19	0.5%	134	0.2%	42	0.5%	386	0.2%
Bldg Material & Garden Equipment & Supplies Dealers	4	0.9%	37	0.7%	26	0.6%	437	0.5%	69	0.8%	935	0.6%
Food & Beverage Stores	5	1.1%	214	3.8%	61	1.5%	1,150	1.4%	128	1.5%	1,958	1.2%
Health & Personal Care Stores	7	1.5%	137	2.4%	79	1.9%	895	1.1%	117	1.3%	1,228	0.7%
Gasoline Stations	5	1.1%	23	0.4%	22	0.5%	102	0.1%	40	0.5%	204	0.1%
Clothing & Clothing Accessories Stores	5	1.1%	14	0.2%	106	2.6%	1,003	1.2%	179	2.1%	1,457	0.9%
Sport Goods, Hobby, Book, & Music Stores	3	0.6%	7	0.1%	46	1.1%	2,712	3.3%	91	1.0%	3,241	2.0%
General Merchandise Stores	3	0.6%	328	5.8%	51	1.3%	2,648	3.2%	99	1.1%	3,366	2.0%
Miscellaneous Store Retailers	12	2.6%	104	1.8%	103	2.5%	773	0.9%	209	2.4%	1,249	0.8%
Nonstore Retailers	1	0.2%	0	0.0%	12	0.3%	11	0.0%	31	0.4%	193	0.1%
Transportation & Warehousing	7	1.5%	76	1.3%	49	1.2%	636	0.8%	110	1.3%	1,366	0.8%
Information	11	2.4%	126	2.2%	95	2.3%	1,624	2.0%	218	2.5%	4,804	2.9%
Finance & Insurance	29	6.2%	224	3.9%	340	8.4%	2,707	3.3%	663	7.6%	5,236	3.2%
Central Bank/Credit Intermediation & Related Activities	11	2.4%	168	3.0%	108	2.7%	1,414	1.7%	207	2.4%	2,434	1.5%
Securities, Commodity Contracts & Other Financial	8	1.7%	24	0.4%	76	1.9%	383	0.5%	152	1.8%	996	0.6%
Insurance Carriers & Related Activities; Funds, Trusts &	9	1.9%	32	0.6%	155	3.8%	910	1.1%	304	3.5%	1,806	1.1%
Real Estate, Rental & Leasing	30	6.4%	155	2.7%	258	6.4%	1,807	2.2%	539	6.2%	3,632	2.2%
Professional, Scientific & Tech Services	52	11.2%	388	6.8%	393	9.7%	2,640	3.2%	922	10.6%	7,115	4.3%
Legal Services	10	2.1%	58	1.0%	94	2.3%	575	0.7%	236	2.7%	1,678	1.0%
Management of Companies & Enterprises	0	0.0%	0	0.0%	7	0.2%	416	0.5%	16	0.2%	537	0.3%
Administrative & Support & Waste Management & Remediation	17	3.6%	126	2.2%	160	3.9%	1,317	1.6%	337	3.9%	3,499	2.1%
Educational Services	9	1.9%	140	2.5%	84	2.1%	1,814	2.2%	221	2.5%	9,846	6.0%
Health Care & Social Assistance	38	8.2%	851	15.0%	509	12.5%	39,542	48.4%	787	9.1%	60,633	36.7%
Arts, Entertainment & Recreation	6	1.3%	56	1.0%	68	1.7%	809	1.0%	163	1.9%	3,117	1.9%
Accommodation & Food Services	22	4.7%	387	6.8%	325	8.0%	6,082	7.4%	677	7.8%	12,099	7.3%
Accommodation	1	0.2%	9	0.2%	16	0.4%	218	0.3%	55	0.6%	886	0.5%
Food Services & Drinking Places	21	4.5%	378	6.7%	309	7.6%	5,864	7.2%	622	7.2%	11,212	6.8%
Other Services (except Public Administration)	64	13.7%	341	6.0%	513	12.6%	3,565	4.4%	1,112	12.8%	11,099	6.7%
Automotive Repair & Maintenance	10	2.1%	49	0.9%	61	1.5%	614	0.8%	164	1.9%	1,228	0.7%
Public Administration	4	0.9%	171	3.0%	36	0.9%	1,404	1.7%	167	1.9%	7,215	4.4%
Unclassified Establishments	25	5.4%	6	0.1%	198	4.9%	120	0.1%	456	5.3%	380	0.2%
Total	466	100.0%	5,675	100.0%	4,062	100.0%	81,761	100.0%	8,675	100.0%	165,096	100.0%

Source: Copyright 2019 Infogroup, Inc. All rights reserved. Esri Total Residential Population forecasts for 2019.

Date Note: Data on the Business Summary report is calculated using Esri's Data allocation method which uses census block groups to allocate business summary data to custom areas.